

4337-s β -Defensin-1 (Human) (Typical Assay)

Asp-His-Tyr-Asn-Cys-Val-Ser-Ser-Gly-Gly-Gln-Cys-Leu-Tyr-Ser-Ala-Cys-Pro-Ile-Phe-Thr-Lys-Ile-Gln-Gly-Thr-Cys-Tyr-Arg-Gly-Lys-Ala-Lys-Cys-Cys-Lys
(disulfide bonds between Cys⁵-Cys³⁴, Cys¹²-Cys²⁷ and Cys¹⁷-Cys³⁵)

M.W. 3928.5

C₁₆₇H₂₅₆N₄₈O₅₀S₆

Appearance: white amorphous powder

Specific optical rotation: $[\alpha]_D^{21}$ - 86.6 ° (C* 0.37; 1% AcOH)

calculated from net weight

Elemental Analysis:

Calculated for C₁₆₇H₂₅₆N₄₈O₅₀S₆ x 5 AcOH x 21.6 H₂O

calc. C: 46.04 H: 6.97 N: 14.56

found: C: 46.04 H: 6.96 N: 14.65

Amino Acid Analysis:

6N HCl, 110 °C, 22 h

Asp (2) 2.03 Thr (2) 1.93 Ser (3) 2.73 Glu (2) 2.06

Pro (1) 1.00 Gly (4) 4.01 Ala (2) 2.04 Cys (6) 6.33

Val (1) 0.98 Ile (2) 1.93 Leu (1) 1.00 Tyr (3) 2.83

Phe (1) 1.05 His (1) 1.03 Lys (4) 4.00 NH₃ (3) 3.77

Arg (1) 1.00

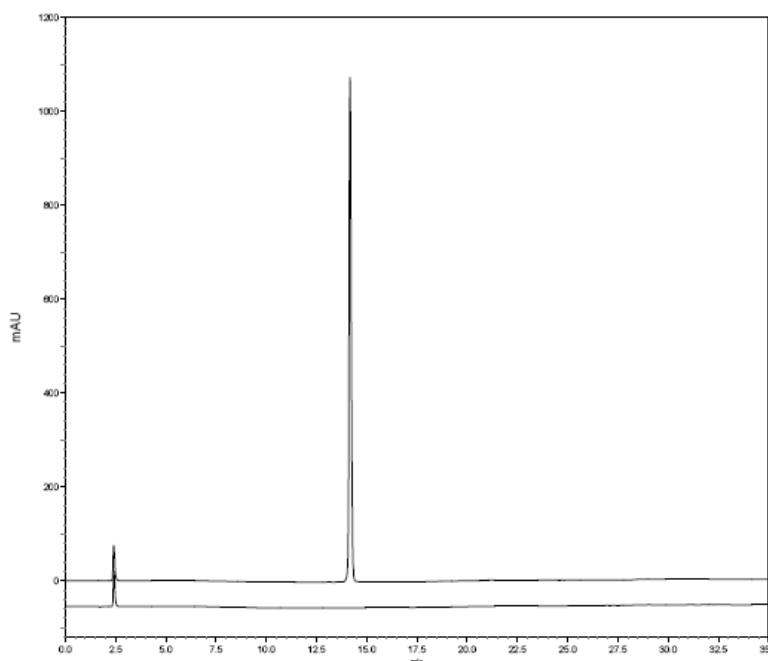
TLC: single spot

Cellulose Layer

Application: 50 µg

Solvent System: n-BuOH : AcOH : H₂O : Pyridine = 15:3:12:10

Located by Ninhydrin and Pauly reagent



Sample Size: 1.2 µl (0.1 mg / 20 µl | 1% HAc)

Column: YMC Pack ODS A-302 (4.6 mm ID x 150 mm)

Detection 210 nm

β -Defensin-1 is sold for research purposes only and not for use in humans

www.peptanova.de/Biologically-Active-Peptides/Defensin-and-LL-37